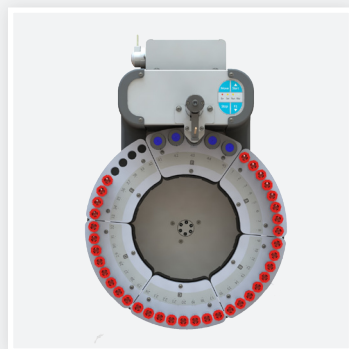
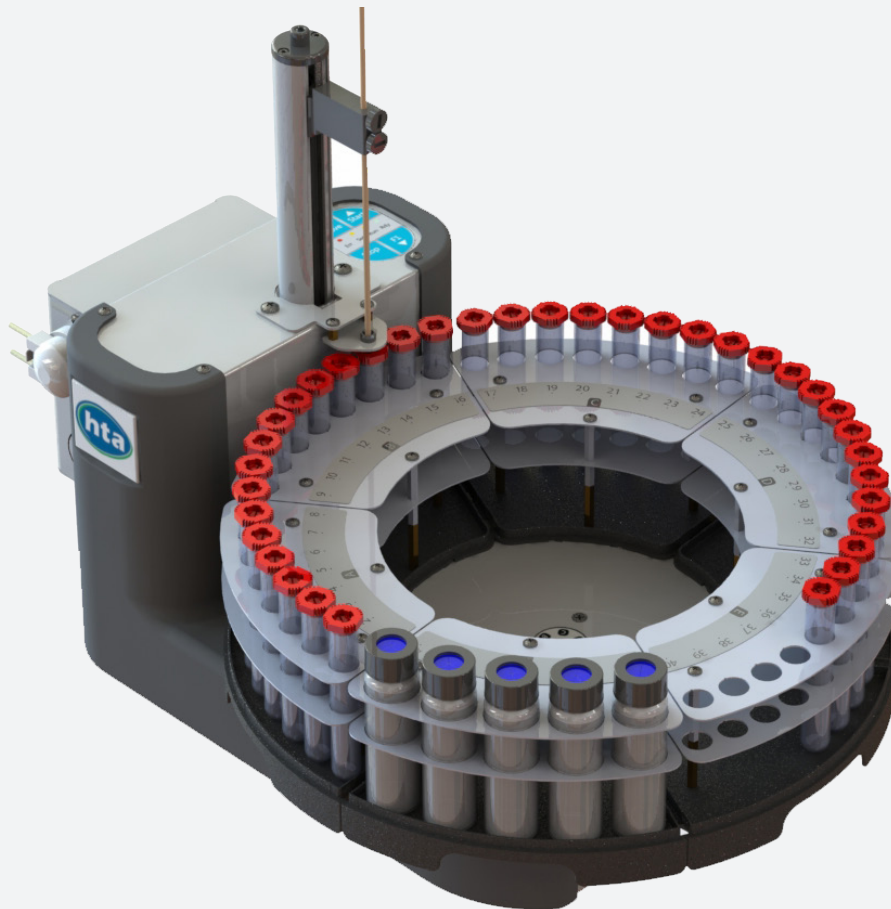




HT1500U

EFFECTIVE AUTOSAMPLER FOR ION CHROMATOGRAPHY
AND FLOW-THROUGH-CELL APPLICATIONS



Load your samples and press START button. The tray rotates and the arm with needle is aligned on top of the first sample tube to be processed.

The needle is inserted at the **programmable depth** where the sample is aspirated through the built-in pump and **delivered to the analyzer**. Then, by using the on-board solvents, the needle and the whole flow-path are cleaned before processing the next sample.

HT1500U, which uses standard consumables, **supports multiple racks – each of them removable** - allowing for continuous feeding and convenient operations.

HT1500U offers the capability to automate up to 40 samples, and also includes 5 positions for rinsing solvents.

Different configurations are available for HT1500U: **a stainless steel needle** is available as well as a **polymeric needle** to deal with metal-sensitive applications. Furthermore both **open and sealed tubes** are supported to fit your workflow.

KEY FEATURES:

- Easy-To-Operate
- Support metal free applications
- Removable racks for continuous feeding

EASY-TO-OPERATE

HT1500U comes with HTA Autosampler Manager (Standard Version), our complimentary software control for autosampler programming. After setting your method once, you **just need to load samples and press START** on the autosampler keypad: experience seamless integration.

NO COMPROMISE ON QUALITY

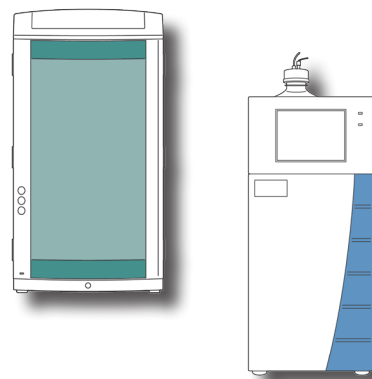
While we have struggled to achieve a **low price**, we haven't made any compromises on quality.

HT1500U has a **strong commitment to quality** that focuses on providing a real unattended experience: **HT1500U** will be your workhorse requiring very little or no attention from lab technicians. The **materials** have been picked up to provide longevity; the **up-to-date technologies** offer reliability that deserves a modern instrument while the design attests to our **care in details**.

Ion Chromatography (IC)

HT1500U is an autosampler designed to automate **IC applications**, combining with any analyzer: anions and cations analysis with just one autosampler.

HT1500U is the best choice for anyone looking for immediate automation.



Flow-through-cell applications

The autosampler is compatible with both push-to-fill and pull-to-fill sample introduction modes.

In **push-to-fill mode**, the peristaltic pump will be connected to the inlet port of the analyzer; it will be located between the needle and the flow-through cell.

In **pull-to-fill mode**, the peristaltic pump will be connected to the outlet port of the analyzer; it will be located between the flow-through-cell and the waste.

Contact your HTA Sales Representative to check how **HT1500U** can support your flow-through-cell application.

TECHNICAL SPECIFICATIONS

General features

Rack:	5, removable
Sample capacity:	
• HT1502U	45 vials, 4ml
• HT1501U; HT1503U	40 tubes, 10ml
• HT1504U	25 vials, 40ml
Maintenance:	preventive counters available
Electrical control:	USB and TTL

Wash

Mode:	every injection/sample/step pre & post injection
Washing reagents:	
• HT1501U; HT1502U	5 vials, 40ml
• HT1503U; HT1504U	2 compartments, total capacity: 970ml

Filling

Sampling depth:	programmable
Sample cycles:	up to 9
Sampling time:	programmable
Filling speed:	programmable
Viscosity delay:	0-25s

Injection

Mode:	push-to-fill/ pull-to-fill
-------	----------------------------

Physical features

Dimensions (WxHxD) ¹ :	355x380x520mm
Weight:	7.5kg
Power supply:	100-240±10%Vac; 50-60Hz; 60W

Free software "HTA Autosampler Manager (Standard Version)" is provided for PC control; upgrade to "HTA Autosampler Manager (CFR 21 Part 11 Version)" should be purchased separately. PC is required for setup, service, method and sequence editing.

¹ Without accounting the transfer line

HTA s.r.l.

via del mella, 77-79 - 25131 Brescia - ITALY
T: +39 030 3582920 - F: +39 030 3582930
www.hta-it.com | enquiry@hta-it.com



Distributed by: